



# Carolina 2 267

Our specially designed homes for sloping sites feature many benefits

- ✓ Modern facade options
- ✓ Better backyard
- ✓ Unique split level design
- ✓ Perfect for downhill slope
- ✓ Less retaining walls
- ✓ Living areas on different levels
- ✓ Driveway not as steep
- ✓ Signature design
- ✓ Four bedrooms

## Facade options & features

Facade	Roof type	Total m <sup>2</sup>	Total squares
Metro	Tiles	263.73 m <sup>2</sup>	28.4 squares
Cosmo	Tiles	266.87 m <sup>2</sup>	28.7 squares
Executive	Tiles	267.54 m <sup>2</sup>	28.8 squares
Hamptons	Tiles	267.73 m <sup>2</sup>	28.8 squares
Retro	Colorbond	266.75 m <sup>2</sup>	28.7 squares
Grande	Colorbond	266.89 m <sup>2</sup>	28.7 squares



**MONTGOMERY**  
HOMES

Grande Facade



Retro Facade



Hamptons Facade



Executive Facade



Cosmo Facade



Metro Facade



montgomeryhomes.com.au

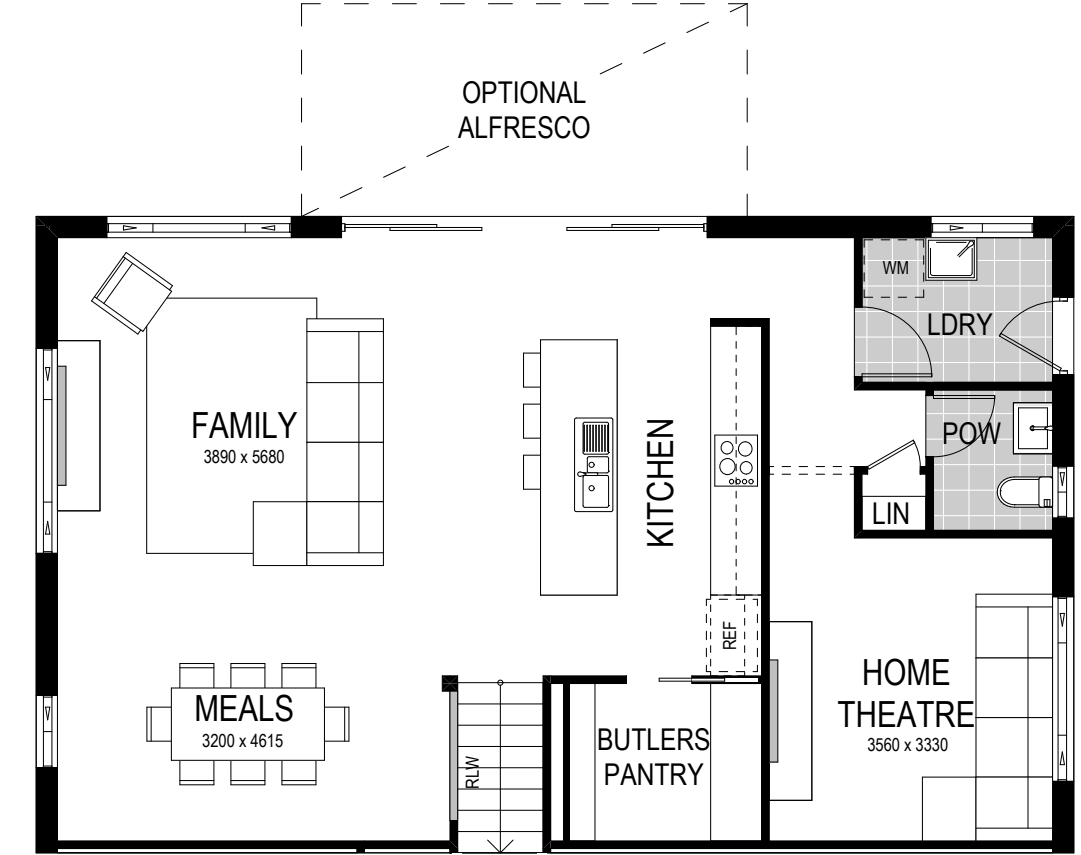
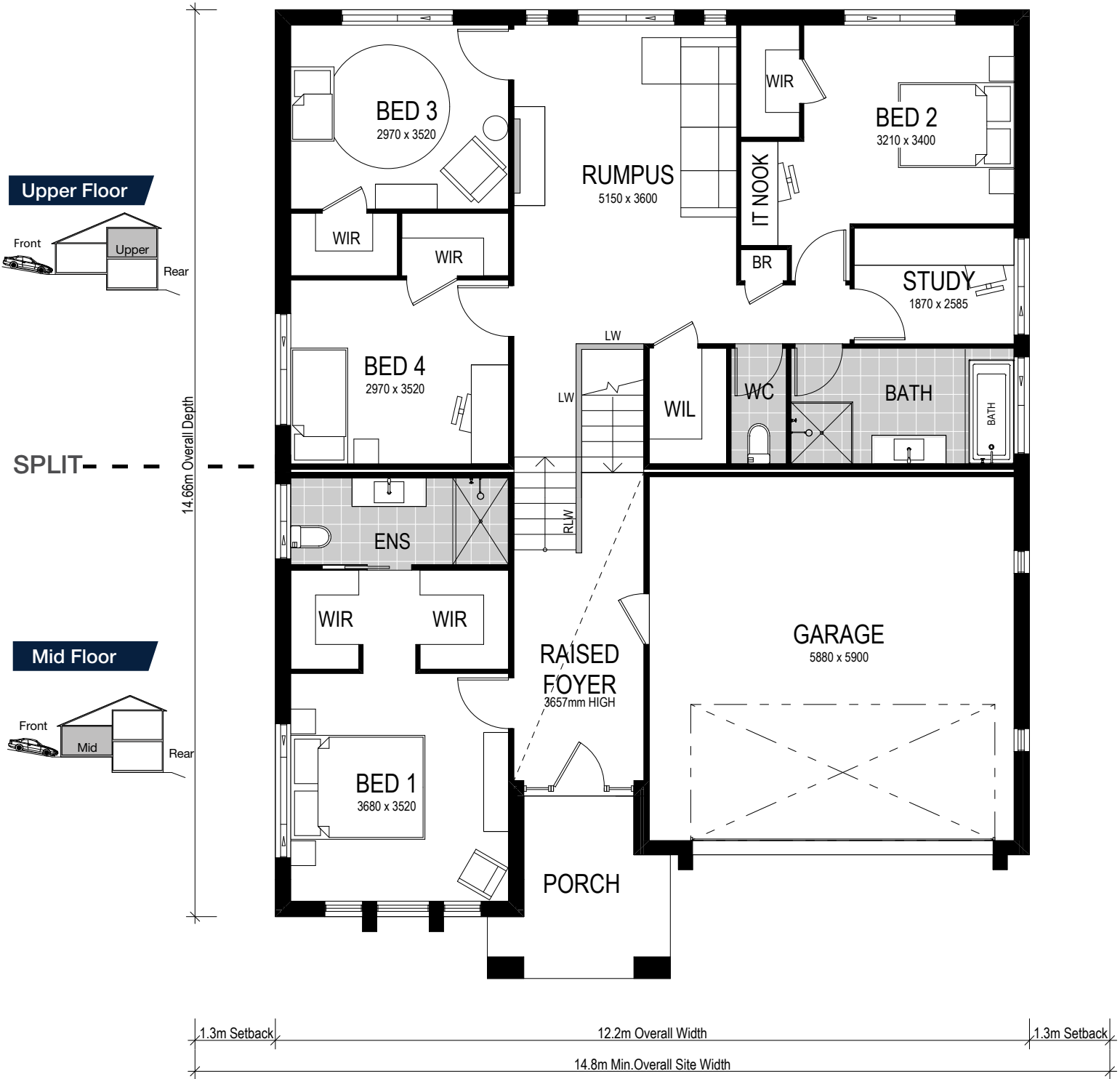
NEWCASTLE 02 4945 4000  
 SYDNEY 02 8883 5400  
 CENTRAL COAST 02 4384 1441



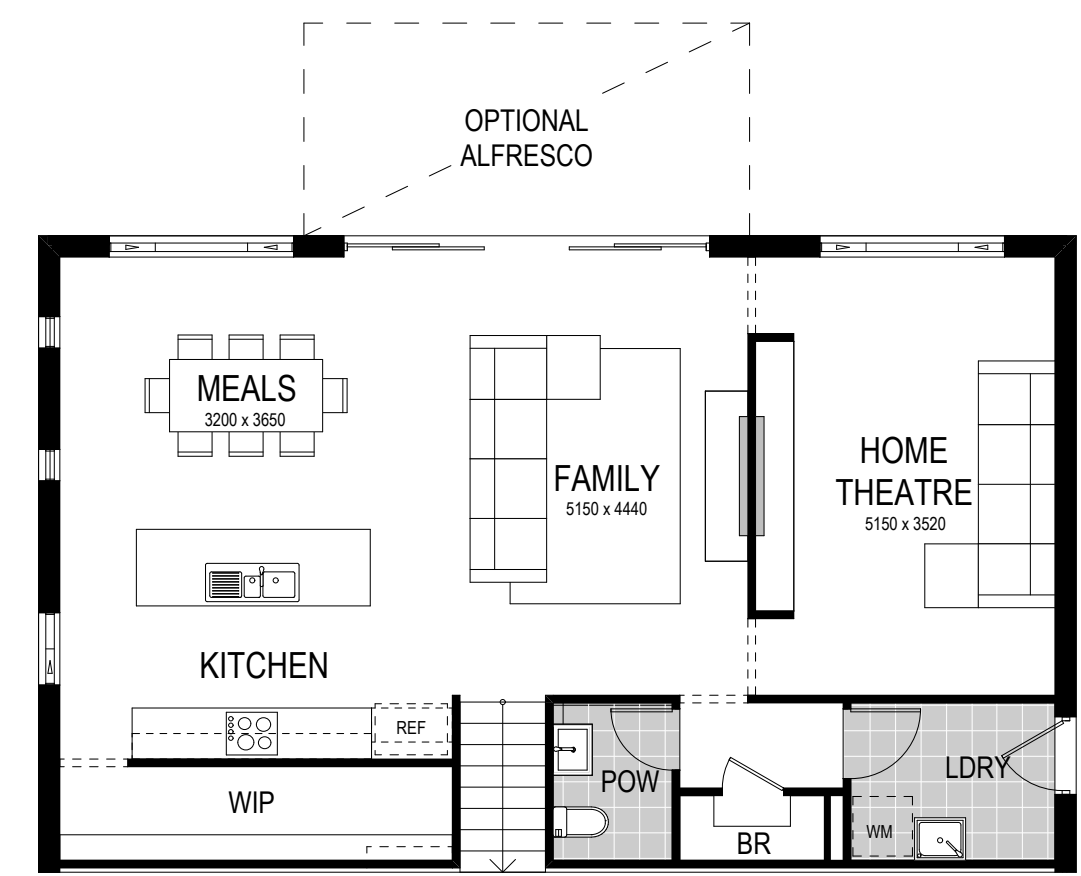
# Carolina 2 267

- 4 Beds
- 2.5 Baths
- 2 Parks

Note: Artists impressions and pictures shown in this brochure may not be standard finishes – please refer to standard inclusions list for details.



**Lower Floor**  
Option A Layout



**Lower Floor**  
Option B Layout

- 4 Beds
- 2.5 Baths
- 2 Parks

The **Carolina 2 267** is a split level slab design for a downhill slope. This design features kitchen and primary entertaining areas on the lower floor, private master suite on the mid floor, with rumpus, living areas and bedrooms on the upper floor. Available in six contemporary facades — see back page for facade options and details.

**Important Notice:** Grande facade plan shown. Scale: 1:100. Copyright © All brochures, sketches & plans, whether conceptual or architectural, that we have developed on your behalf remain the property of Montgomery Homes under copyright law & we retain & claim all rights to these plans. Despite popular belief, changing our plans by 50% or more does not avoid legal responsibility for a copyright breach. Artwork update: 091219