



# Southport 189

Our specially designed homes for level sites feature many benefits

- ✓ Suitable for narrow sites
- ✓ Open plan living
- ✓ Optional alfresco
- ✓ Walk-in pantry and linen
- ✓ Home theatre
- ✓ Spacious single storey
- ✓ Unique design
- ✓ Modern layout
- ✓ Easy access for mobility



## MONTGOMERY HOMES

Cosmo Facade



Metro Facade



montgomeryhomes.com.au

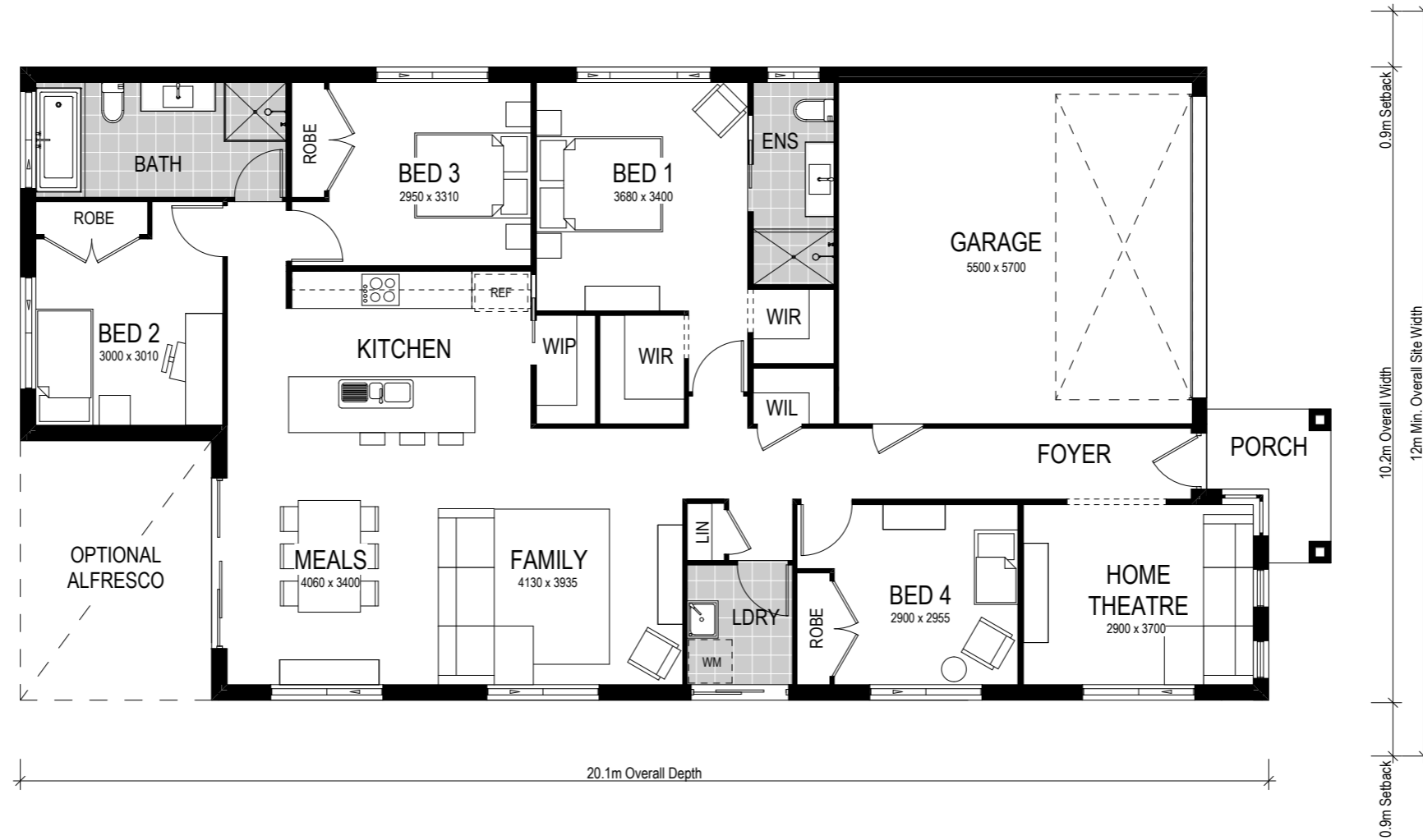
NEWCASTLE 02 4945 4000  
 SYDNEY 02 8883 5400  
 CENTRAL COAST 02 4384 1441



# Southport 189

- 4 Beds
- 2.5 Baths
- 2 Parks

Note: Artists impressions and pictures shown in this brochure may not be standard finishes – please refer to standard inclusions list for details.



4 Beds

Our Southport 189 is a great family home suitable for a narrow, shallow block yet still provides ample space and style.

2.5 Baths

This modern design benefits from an open plan which flows seamlessly from the foyer to the gourmet kitchen, meals room, and family areas. This living area is a beautiful space that connects to the backyard, perfect for year-round entertaining.

2 Parks

The master suite is removed from the busiest part of the home with a set-back entrance for maximum privacy. Further to the rear of the home, adjacent to the main bathroom, are two more bedrooms both with built-in robes.

The Southport 189 is one of our newest home designs, that has been thoughtfully designed to provide all the mod-cons you need in your new home suitable for a smaller block.

## Facade options & features

Facade	Roof type	Total m <sup>2</sup>	Total squares
Metro	Tiles	191.24 m <sup>2</sup>	20.6 squares
Cosmo	Tiles	193.79 m <sup>2</sup>	20.9 squares

**Important notice: Cosmo facade plan shown. Scale: 1:100. Copyright ©**  
 All brochures, sketches & plans, whether conceptual or architectural, that we have developed on your behalf remain the property of Montgomery Homes under copyright law & we retain & claim all rights to these plans. Despite popular belief, changing our plans by 50% or more does not avoid legal responsibility for a copyright breach.  
 Artwork update: 161219