



Brighton 229

Our specially designed homes for level sites feature many benefits

- ✓ Open plan living
- ✓ Great for entertaining
- ✓ Unique design
- ✓ Optional stacker doors
- ✓ Separate living areas
- ✓ Walk-in pantry
- ✓ Easy access for mobility
- ✓ Optional alfresco
- ✓ Dual walk-in robe in master suite



MONTGOMERY HOMES

Hamptons Facade



Metro Facade



Retro Facade



Vogue Facade



montgomeryhomes.com.au

NEWCASTLE 02 4945 4000
 SYDNEY 02 8883 5400
 CENTRAL COAST 02 4384 1441

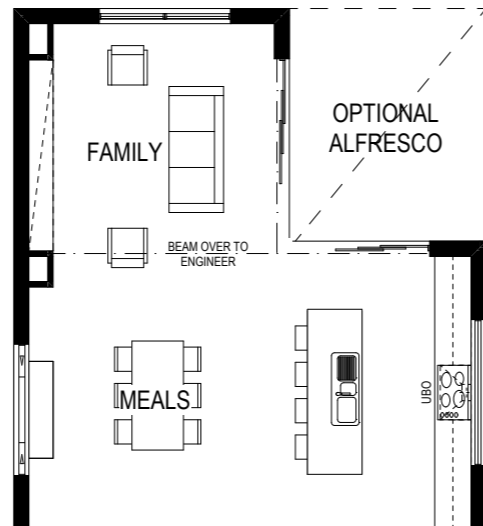
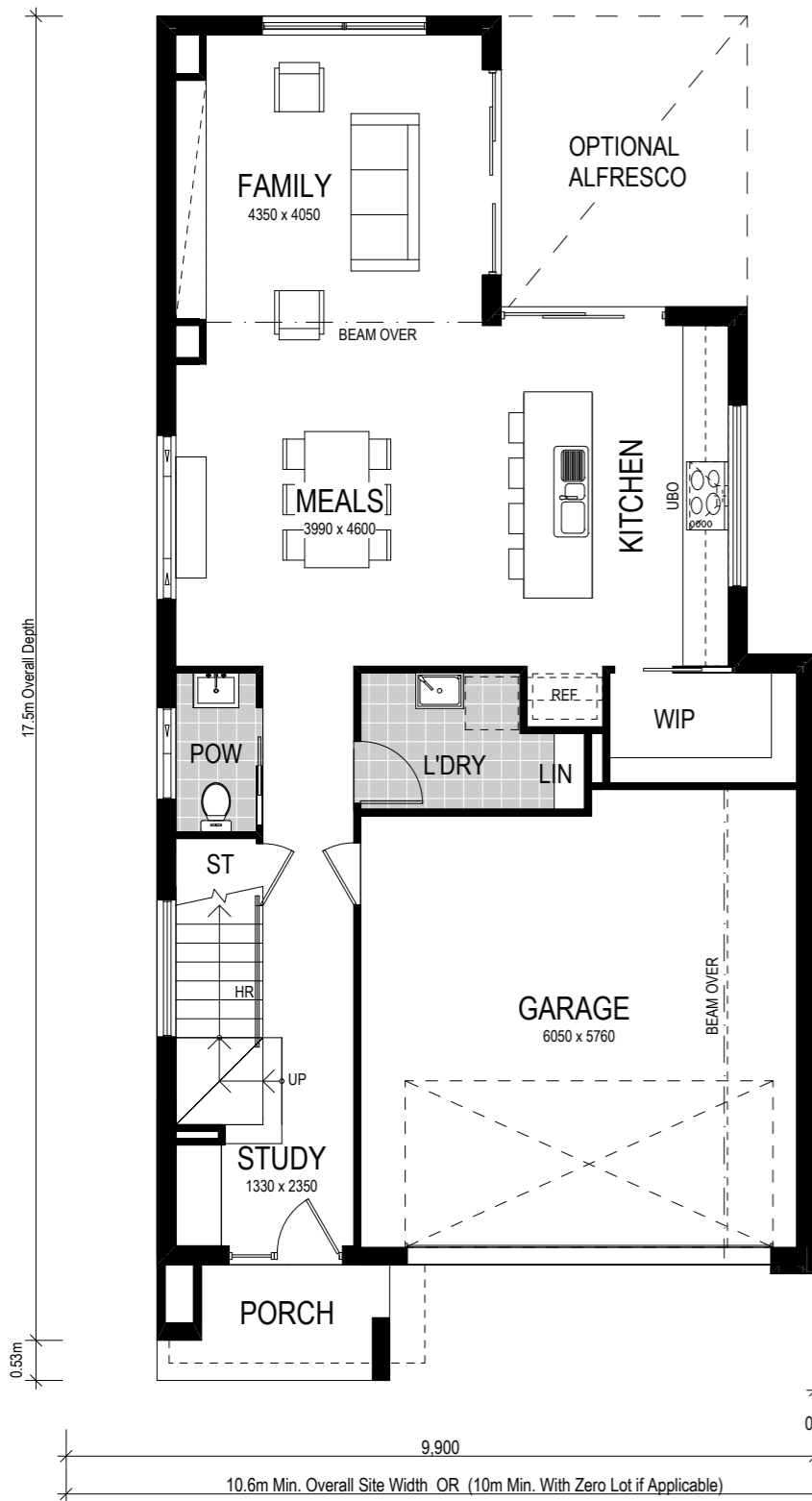


Brighton 229

 4 Beds
 2.5 Baths
 2 Parks

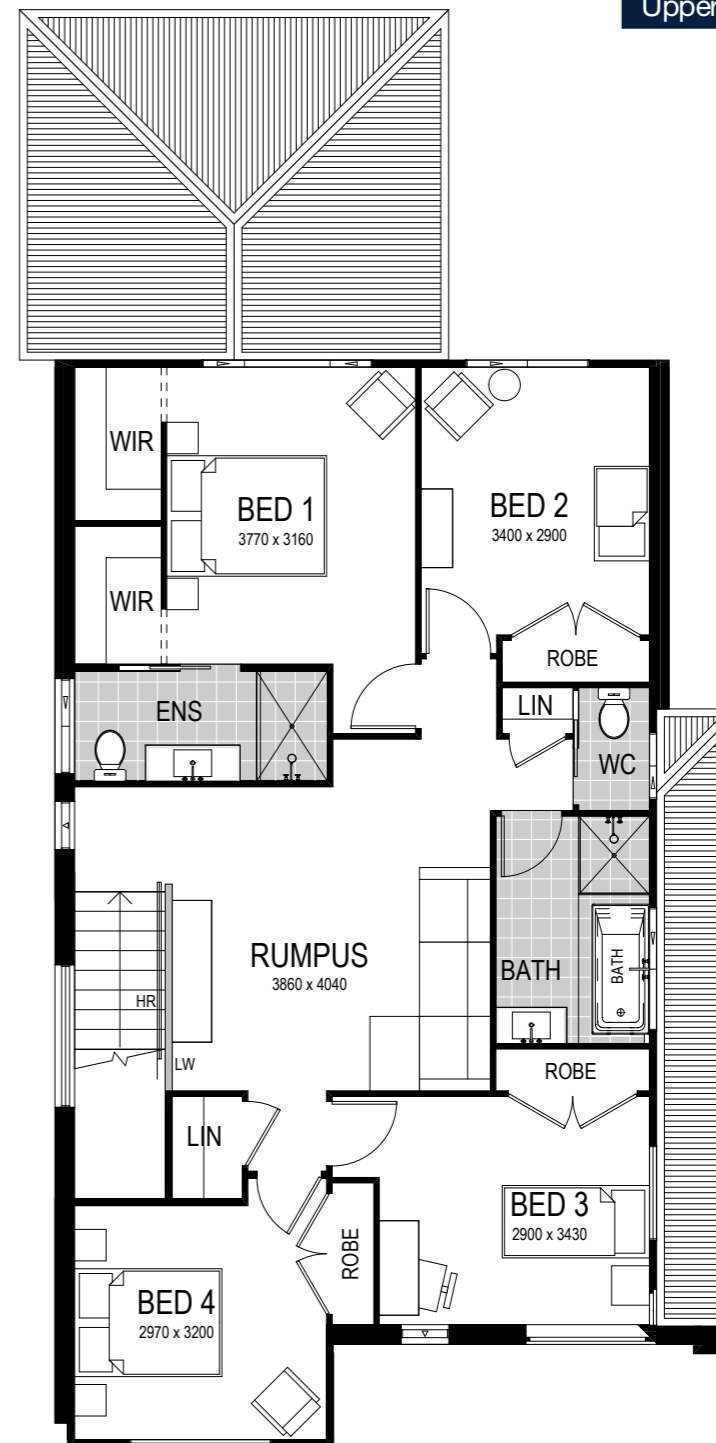
Note: Artists impressions and pictures shown in this brochure may not be standard finishes – please refer to standard inclusions list for details.

Lower Floor



This home is on display at:
HomeWorld Marsden Park
 22 Ellison Street
 Marsden Park

Upper Floor



Facade options & features

Note: Hamptons facade plan shown Scale: 1:100

| Facade | Roof type | Total m ² | Total squares |
|----------|-----------|-----------------------|---------------|
| Hamptons | Tiles | 207.43 m ² | 22.3 squares |
| Metro | Tiles | 229.33 m ² | 24.7 squares |
| Retro | Tiles | 209.49 m ² | 22.6 squares |
| Vogue | Tiles | 209.49 m ² | 22.5 squares |

Important - please read - copyright ©

All brochures, sketches & plans, whether conceptual or architectural, that we have developed on your behalf remain the property of Montgomery Homes under copyright law & we retain & claim all rights to these plans. Despite popular belief, changing our plans by 50% or more does not avoid legal responsibility for a copyright breach.

- 4 Beds
- 2.5 Baths
- 2 Parks

The **Brighton 229** is a two storey design perfect for level and narrow sites. This home has primary entertaining areas on the lower floor with space for an optional alfresco adjacent to the kitchen. Consider an optional stacker door to add extra dimension to your living area. Available in Hamptons, Metro, Retro, Vogue facades.